

Type 100|100K
ESS

Movable Partitions

Operation & Maintenance Manual
Type 100/100K ESS
Double Point

Index

Introduction 3

Warranty..... 4

Project Details 5

Operating Instructions 6

Inset Pass doors..... 9

Cleaning..... 12

Maintenance 12

Contact Details 13

Introduction

Thank you very much for purchasing your HUF COR mobile partition wall.

The Hufcor Partitions for this installation have been custom made to the architect's and owner's specifications. Each partition has been carefully fabricated and installed to provide many years of trouble-free service. The key to life of the product is proper operation, care and maintenance. The correct operation and recommended care are outlined in this **Owner's Manual** for your guidance. If any malfunction of these partitions occurs, please phone your local Hufcor Distributor for service. This must be done immediately since Hufcor cannot be responsible for damages which result from delays or failure to advise Hufcor or Hufcor's local Distributor.

This operation manual can also be downloaded on our website hufcor.com

Warranty

HUFCOR Operable Walls are guaranteed against defects in material and/or workmanship for a period of 24 months from the date of installation excluding any abuse or incorrect operation of the product.

We reserve the right to withdraw the warranty where any payments due are outstanding.

A service by Hufcor or an approved distributor (please contact Hufcor for details of approved distributors) must be carried out after every 200 opening/closing cycles or 12 months, whichever is sooner. Failure to service the wall correctly will invalidate the warranty.

We suggest that this manual is retained within the building manual, but at the same time it would be useful to keep a set with the partition, possibly with the operating handle or, if there is one, within the storage pocket.

The installation should be registered by the end user by completing the details below and sending to Hufcor (preferably by e mail). Please find contact details on **final page**.

End User Name	
Address (for correspondence)	
Contact Number	
Contact Email	

Project Details

Sales Centre Name:	
Sales Centre Number:	
Sales Centre Reference:	
Month/Year of Installation:	
Project Name & Address:	
Partition Model:	
Hufcor Reference:	
Panel finish:	
Drawing Number(s):	

Operating Instructions

General Notes

1. Operable wall partition systems are simple to operate as long as the correct sequence of operation and handling instructions are followed.
2. Restrict the movement of panels to only those personnel who are familiar with their operation.
3. Ensure that each sequence of operation is performed at a steady pace – do not rush.
4. Never force or apply unnecessary pressure when moving the panels into or out of their stacking location.
5. Report problems immediately should the panels become stiff to operate or malfunction for whatever reason, as continued use could damage the track or panels.
6. The following notes provide general guidance in respect to moving the panels out of and into their stacked position. If there are any specific instructions particular to this installation, these will be detailed on the following pages.

To close the partition (moving panels from their stacked location)

1. Ensure the key switch is set to “closing” (see diagram).
2. Face the first panel in the stack and using both hands grip firmly either side of the panel.
3. Gently pull the panel out of its stacked location, turning it within the track such that the leading edge aligns and follows the main track run.
4. Move the panel along the track until it either engages with the next panel or the end jamb post. Once in position, the micro switches will activate the top and bottom seals of the panel.
5. Move the remaining panels out in turn, ensuring that each panel is moved completely down the track to abut the previously positioned panel. Slow momentum before contact, carefully align and then push panel to lock into the adjacent panel. Once in position, the micro switches will activate the top and bottom seals of the panel.

6. The final panel is the Lever closure panel (LCP), which is used to seal the vertical gap between the structural wall and the partition. The LCP includes a magnetically operated switch which is identified by a small dot on the face of the panel.
7. Move the LCP into position and push panel to lock into the adjacent panel.
8. Use the magnetic fob and press against the panel in the correct position to activate the extending telescopic sleeve and top/bottom seals. The magnetic fob must be kept in position during the operation of the LCP. Removing the fob will stop the operation of the panel (this is a safety feature to prevent a finger trap).
9. Switch the key into a neutral position, remove the key from the key switch and store key and magnetic fob to prevent unauthorized use.

To open the partition (moving panels back into stacked location)

1. Essentially the operation is a reversal of the above sequence.
2. Ensure the key switch is set to open (see diagram).
3. The LCP will retract the seals automatically.
4. Once the seals have fully retracted, separate the LCP from the adjacent panel and move into the parking area.
5. Once the LCP panel breaks contact with the adjacent panel, then the panel seals will retract automatically.
6. Once the seals have fully retracted, move the panel into the parking area, this will cause the adjacent panel seals to retract.
7. Repeat operation 6. above until all panels are in the parking area.
8. Switch the key into a neutral position, remove the key from the key switch and store key and magnetic fob to prevent unauthorized use.

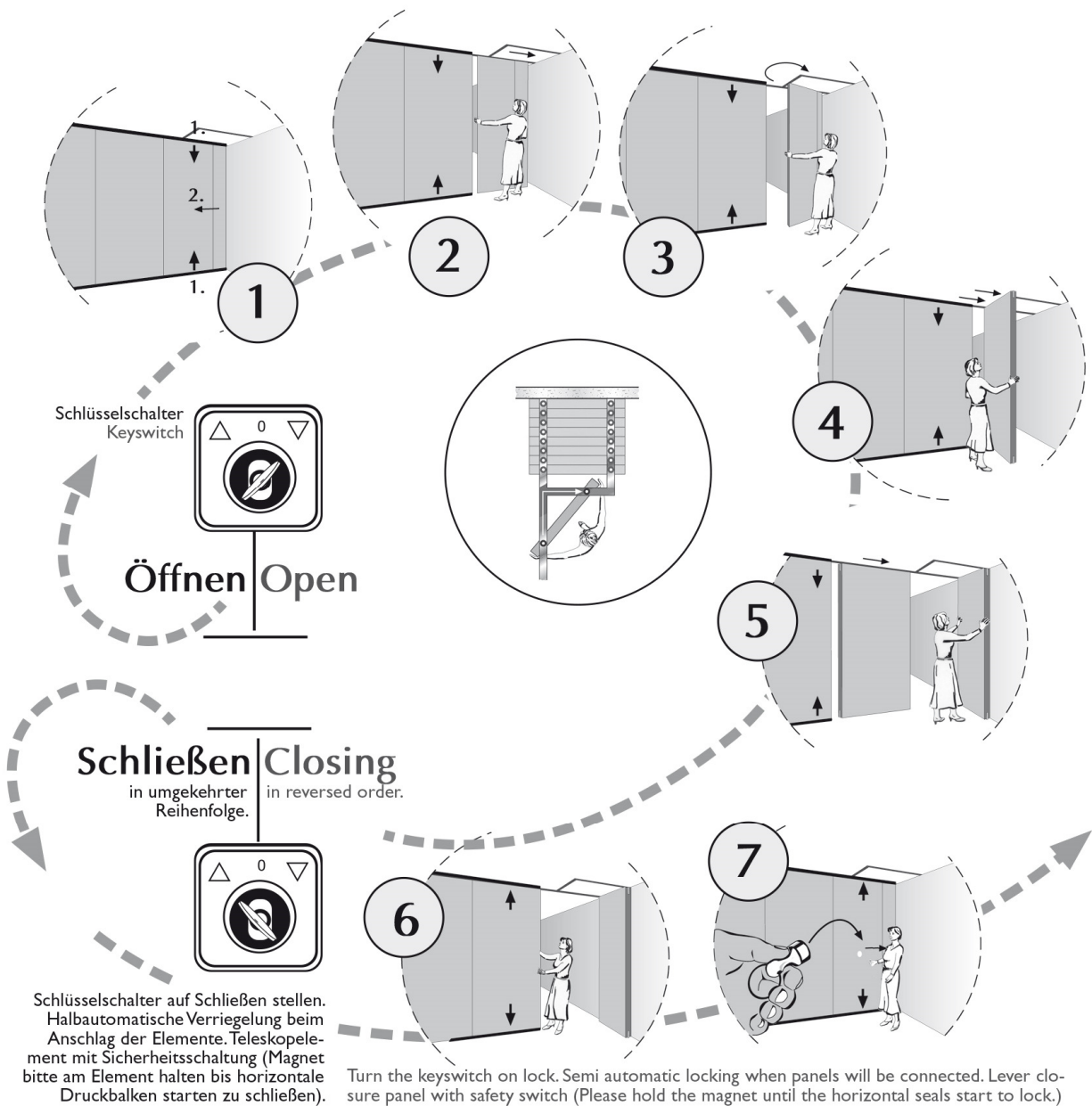
Hint

While moving the panels through intersections avoid stopping. The carriers may stop in an intersection and appear stuck. If this happens, move the panel back in the direction it came from. Try again and avoid stopping while the carriers are in the intersection.

Mobile Trennwand Typ
movable partition type

Halbautomatische Verriegelung 100/100K ESS semi automatic locking

Zwei-Punkt-Aufhängung
Two-point-suspension



Inset Pass Doors

General Notes

The operable wall system may incorporate inset pass door(s) - Single Inset Passdoors (SIPD) or Double Inset Passdoors (DIPD) that must be operated correctly when closing or opening the partition.

The pass door panel should be kept secured within the panel(s), whenever the panel is moved.

As long as the partition has been set plumb the pass door should close and operate correctly.

The procedure is for moving an ESS system pass door exactly the same as for standard panels above.

Note: ESS system pass doors DO NOT incorporate floor bolts.

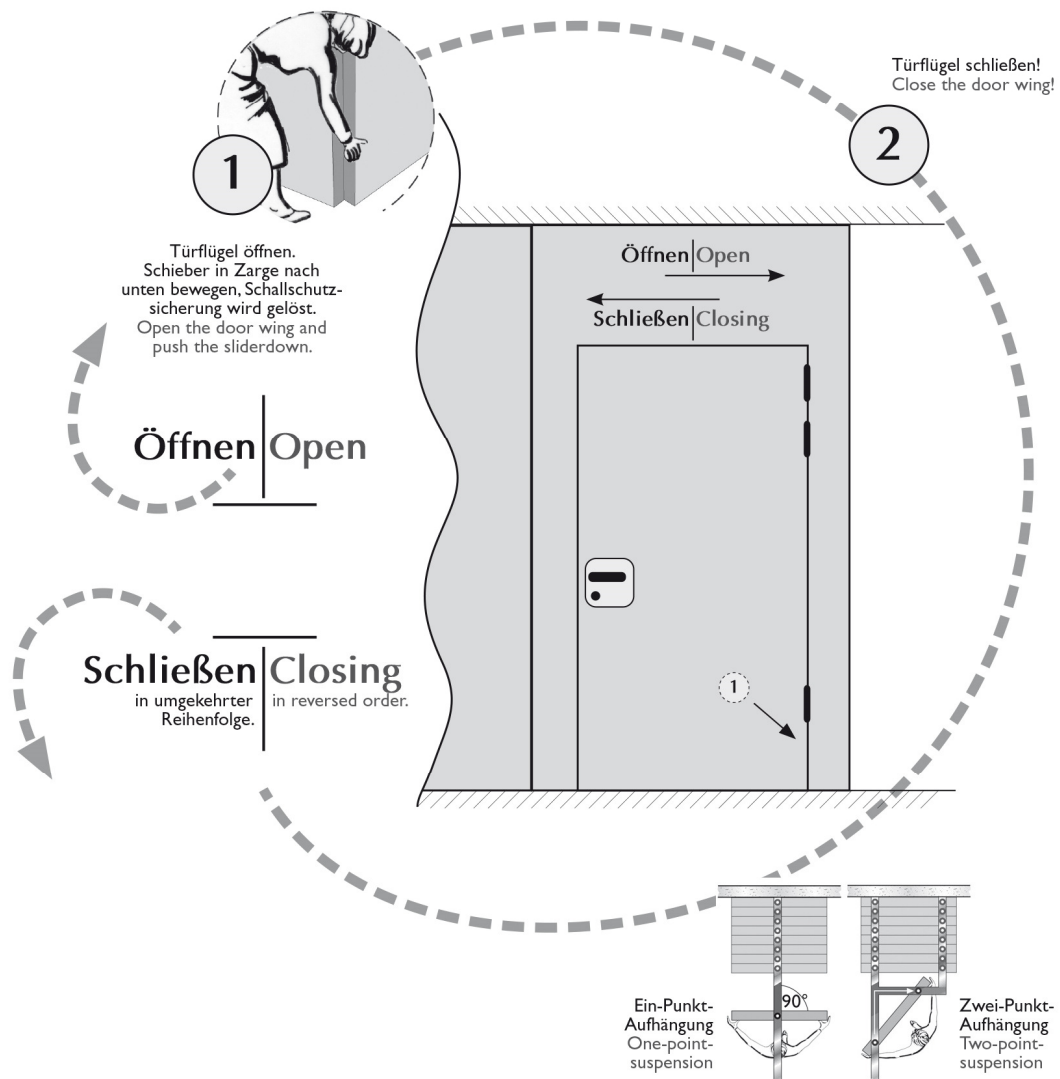
Operating Instructions Diagram Single Inset Passdoor

Mobile Trennwand Typ
movable partition type

Halbautomatische Verriegelung

100/100K ESS
semi automatic locking

Ein- und Zwei-Punkt-Aufhängung
One- and Two-point-suspension



Double Doors (DIPD)

Double doors are operated in the same way as the single doors with the following exceptions

1. The door with the lock/handle is called the main leaf, the other door is called the slave leaf.
2. The slave leaf has a floor pin which is operated by a lever in the edge of the door. If both doors are to be opened, the floor pin in the slave leaf must be released. If only the main leaf is to be used, the slave leaf can be locked in place with the floor pin.
3. The panel acoustic seals should be retracted before the floor pins are released when opening the partition.
4. The floor pins should be located before operating the acoustic seals when closing the partition.
5. The acoustic seal operating mechanism is located in the face of the panel adjacent to the door hinges.

Cleaning

- **DBS (Melamine):**
First remove any loose dust using a soft brush, the melamine can then be cleaned with water and mild detergent before being sponge dried.
- **HPL/CPL:**
First remove any loose dust using a soft brush, the laminate can then be cleaned with water and mild detergent before being sponge dried.
- **Veneer:**
For cleaning, please use only soapy water. Avoid abrasive, aggressive detergents. Dry the surface with a damp cloth. Prevent standing wetness. We recommend not to use furniture polishes.

Maintenance

Hufcor partitions are designed to require very little maintenance. However, they should be serviced every 200 opening/closing cycles or 12 months whichever is sooner by Hufcor or an approved distributor to ensure trouble free operation and compliance with the 24 months warranty.

Regular maintenance will involve cleaning of the track & the application lubricant to assist the movement of the carriers.

Locks, hardware and general operation will be checked.

After prolonged use, it may be advisable to change the seals.

Whilst panels and partition units can be removed for repair or replacement, it is important to ensure that any such work is only carried out by HUFCOR Deutschland GmbH or approved distributor.

Problems should be reported immediately, particularly if the partition becomes stiff to operate. Refer to the warranty details and project details for further information.

Address of manufacturer:

HUFCOR Deutschland GmbH

Triftweg 36, 06847 Dessau-Roßlau (GERMANY)

Office +49 340 540796-0

info@hufcor.de

hufcor.com